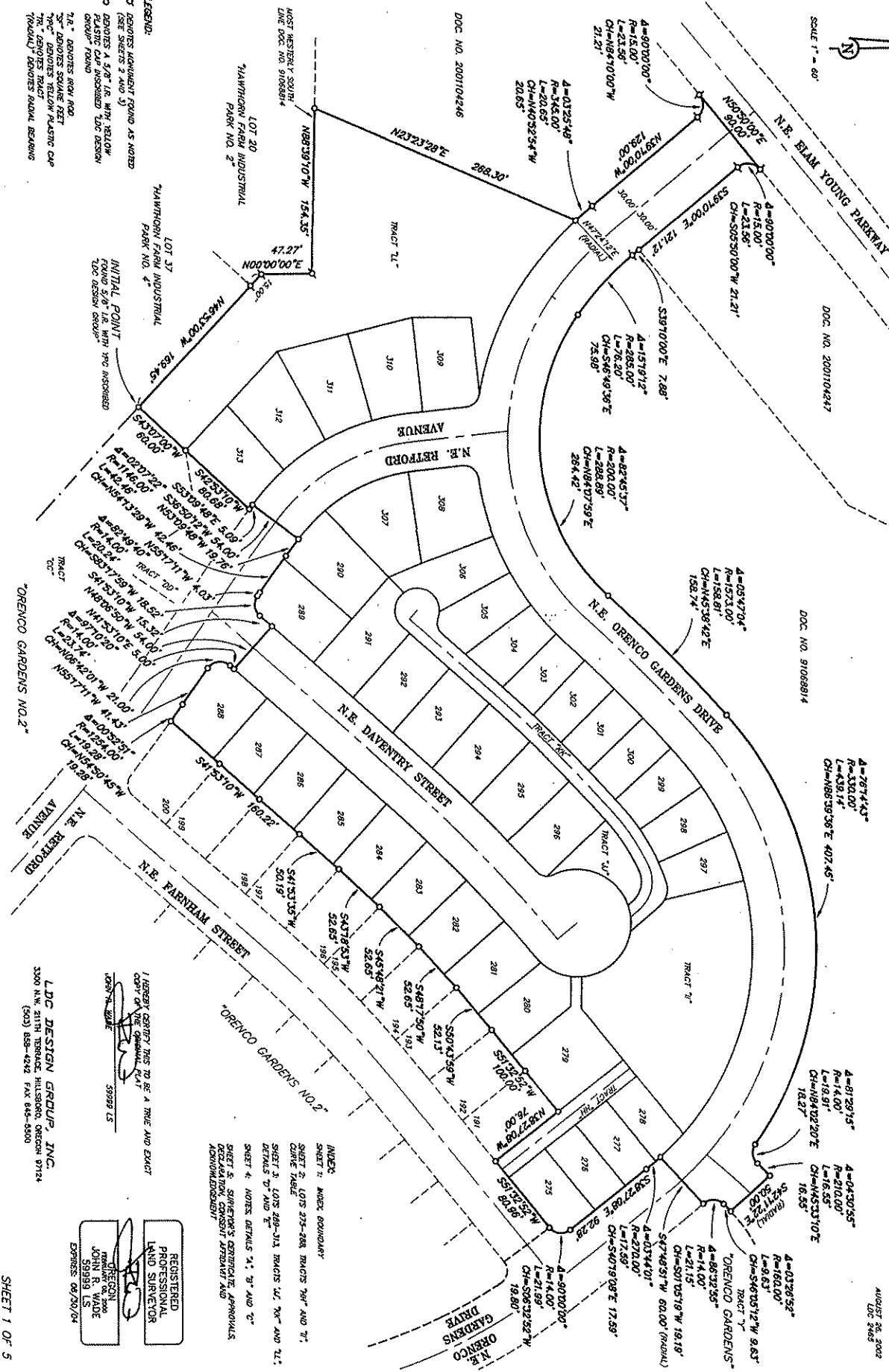


Phase 4

RECORDED AS DOCUMENT NO. 2022-2116-139
ORENCO GARDENS NO. 4
 A REPLAT OF A PORTION OF LOT 20, HAWTHORN FARM INDUSTRIAL PARK NO. 4 AND A PORTION OF THE NW 1/4 OF SECTION 34, T. 1 N., R. 2 W., WM. CITY OF HILLSBORO, WASHINGTON COUNTY, OREGON

AUGUST 26, 2022
 DOC # 2463



LEGEND:
 ○ DENOTES ADJACENT GRUND AS NOTED (SEE SHEETS 2 AND 3)
 ○ DENOTES 1/8" IR. W/IN YELLOW PLASTIC CAP INCORPORATED TO DESIGN GROUP FOUND
 ○ DENOTES 1/8" IR. W/IN YELLOW PLASTIC CAP INCORPORATED TO DESIGN GROUP FOUND
 ○ DENOTES SQUARE BEIT
 ○ DENOTES TRACT
 ○ DENOTES RADIAL BEARING

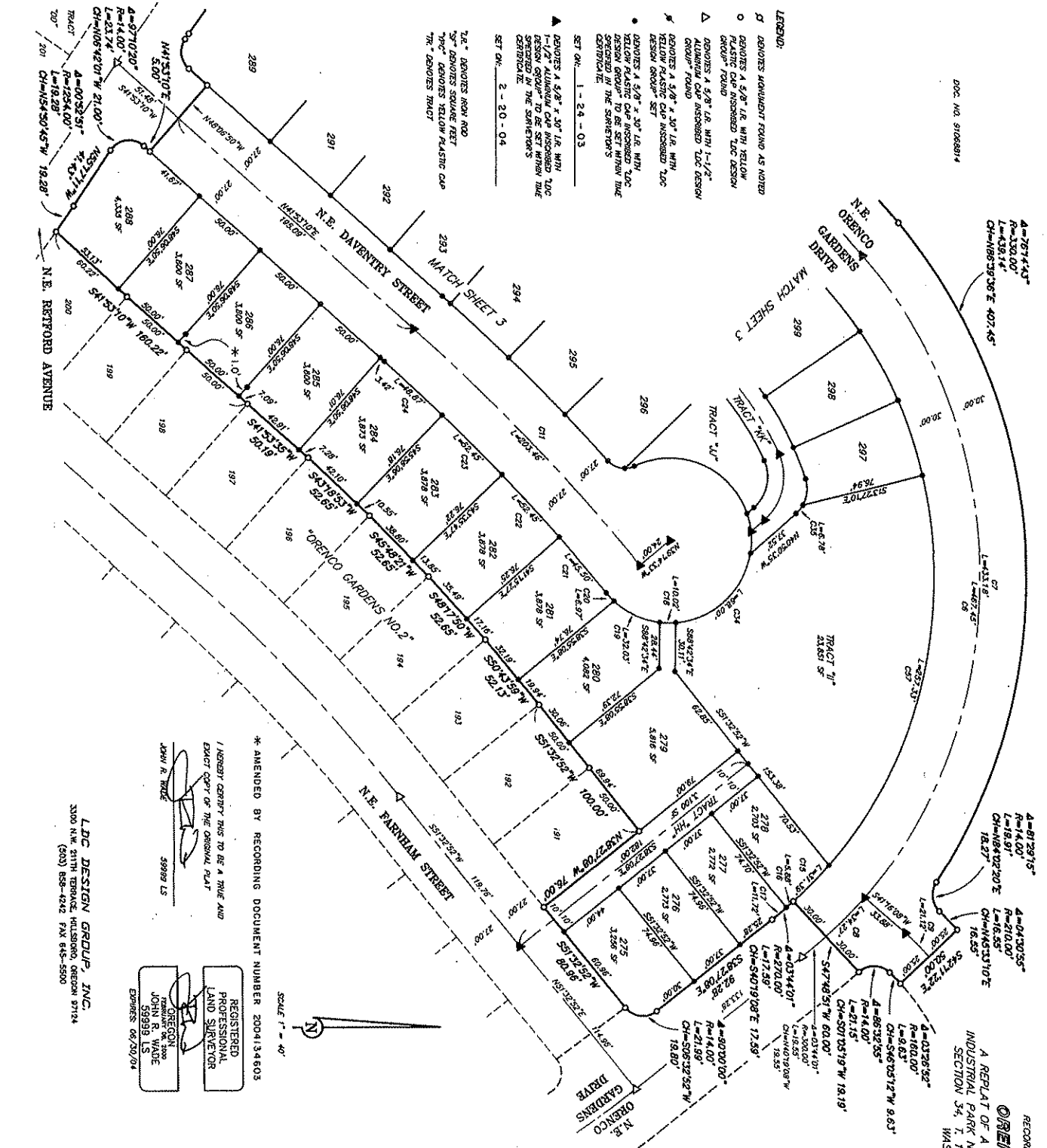
INDEX:
 SHEET 1: MOORE BOUNDARY
 SHEET 2: LOTS 273-288 TRACTS 79R AND 71; CURVE TABLE
 SHEET 3: LOTS 289-312 TRACTS 1L, 79E AND 71L; DETAILS 'D' AND 'E'
 SHEET 4: HOSES DETAILS 'A', 'B' AND 'C'
 SHEET 5: SIGNATOR'S CENTRAL/LE APPLICABLES; DETAILATION; CONSENT APPROVAL AND ACKNOWLEDGEMENT

I HEREBY CERTIFY THIS TO BE A TRUE AND EXACT COPY OF THE ORIGINAL PLAN.
 LDC DESIGN GROUP, INC.
 3300 N.W. 21TH TERRACE, HILLSBORO, OREGON 97124
 (503) 658-4742 FAX 658-5500

REGISTERED PROFESSIONAL LAND SURVEYOR
 JOHN B. WADE
 59989 LS
 EXPRESSES: 06/20/04

Phase 4

RECORDED AS DOCUMENT NO. 2004134603
ORENCO GARDENS NO. 4
 A REPLAT OF A PORTION OF LOT 20, THAWTHORN FARM INDUSTRIAL PARK NO. 47 AND A PORTION OF THE NW 1/4 OF SECTION 34, T. 4N., R. 2 W., W.M., CITY OF HILLSBORO, WASHINGTON COUNTY, OREGON
 AUGUST 24, 2004
 LOS 2463



- LEGEND:**
- ◻ DENOTES MOVEMENT FOUND AS NOTED
 - DENOTES A 5/8" I.R. WITH YELLOW PLASTIC CAP ASSIGNED TAC DESIGN GROUP FOUND
 - △ DENOTES A 3/8" I.R. WITH 1-1/2" ALUMINUM CAP ASSIGNED TAC DESIGN GROUP FOUND
 - ★ DENOTES A 5/8" x 30" I.R. WITH YELLOW PLASTIC CAP ASSIGNED TAC DESIGN GROUP SET
 - DENOTES A 5/8" x 30" I.R. WITH YELLOW PLASTIC CAP ASSIGNED TAC DESIGN GROUP TO BE SET WITHIN THE CONTROLLED ZONE
 - ▲ DENOTES A 5/8" x 30" I.R. WITH PLASTIC CAP ASSIGNED TAC DESIGN GROUP TO BE SET WITHIN THE CONTROLLED ZONE
- 7/8" DENOTES IRON ROD
 3/4" DENOTES SQUARE REBAR
 1/2" DENOTES YELLOW PLASTIC CAP
 1" DENOTES TRACT
- SET DW. 2 - 20 - 04
 SET DW. 1 - 24 - 03

LDC DESIGN GROUP, INC.
 3300 N.W. 31TH TERRACE, HILLSBORO, OREGON 97124
 (503) 885-4242 FAX 845-5900

* AMENDED BY RECORDING DOCUMENT NUMBER 2004134603
 I HEREBY CERTIFY THIS TO BE A TRUE AND EXACT COPY OF THE ORIGINAL PLAT
 JOHN R. WADE
 59999 LS
 OREGON LAND SURVEYOR
 JOHN R. WADE
 59999 LS
 EXPIRES 06/30/04

SCALE 1" = 40'

REGISTERED PROFESSIONAL LAND SURVEYOR JOHN R. WADE 59999 LS EXPIRES 06/30/04

TRAJECT "1"

TRAJECT "2"

TRAJECT "3"

TRAJECT "4"

TRAJECT "5"

TRAJECT "6"

TRAJECT "7"

TRAJECT "8"

TRAJECT "9"

TRAJECT "10"

TRAJECT "11"

TRAJECT "12"

TRAJECT "13"

TRAJECT "14"

TRAJECT "15"

TRAJECT "16"

TRAJECT "17"

TRAJECT "18"

TRAJECT "19"

TRAJECT "20"

TRAJECT "21"

TRAJECT "22"

TRAJECT "23"

TRAJECT "24"

TRAJECT "25"

TRAJECT "26"

TRAJECT "27"

TRAJECT "28"

TRAJECT "29"

TRAJECT "30"

TRAJECT "31"

TRAJECT "32"

TRAJECT "33"

TRAJECT "34"

TRAJECT "35"

TRAJECT "36"

TRAJECT "37"

TRAJECT "38"

TRAJECT "39"

TRAJECT "40"

TRAJECT "41"

TRAJECT "42"

TRAJECT "43"

TRAJECT "44"

TRAJECT "45"

TRAJECT "46"

TRAJECT "47"

TRAJECT "48"

TRAJECT "49"

TRAJECT "50"

TRAJECT "51"

TRAJECT "52"

TRAJECT "53"

TRAJECT "54"

TRAJECT "55"

TRAJECT "56"

TRAJECT "57"

TRAJECT "58"

TRAJECT "59"

TRAJECT "60"

TRAJECT "61"

TRAJECT "62"

TRAJECT "63"

TRAJECT "64"

TRAJECT "65"

TRAJECT "66"

TRAJECT "67"

TRAJECT "68"

TRAJECT "69"

TRAJECT "70"

TRAJECT "71"

TRAJECT "72"

TRAJECT "73"

TRAJECT "74"

TRAJECT "75"

TRAJECT "76"

TRAJECT "77"

TRAJECT "78"

TRAJECT "79"

TRAJECT "80"

TRAJECT "81"

TRAJECT "82"

TRAJECT "83"

TRAJECT "84"

TRAJECT "85"

TRAJECT "86"

TRAJECT "87"

TRAJECT "88"

TRAJECT "89"

TRAJECT "90"

TRAJECT "91"

TRAJECT "92"

TRAJECT "93"

TRAJECT "94"

TRAJECT "95"

TRAJECT "96"

TRAJECT "97"

TRAJECT "98"

TRAJECT "99"

TRAJECT "100"

TRAJECT "101"

TRAJECT "102"

TRAJECT "103"

TRAJECT "104"

TRAJECT "105"

TRAJECT "106"

TRAJECT "107"

TRAJECT "108"

TRAJECT "109"

TRAJECT "110"

TRAJECT "111"

TRAJECT "112"

TRAJECT "113"

TRAJECT "114"

TRAJECT "115"

TRAJECT "116"

TRAJECT "117"

TRAJECT "118"

TRAJECT "119"

TRAJECT "120"

TRAJECT "121"

TRAJECT "122"

TRAJECT "123"

TRAJECT "124"

TRAJECT "125"

TRAJECT "126"

TRAJECT "127"

TRAJECT "128"

TRAJECT "129"

TRAJECT "130"

TRAJECT "131"

TRAJECT "132"

TRAJECT "133"

TRAJECT "134"

TRAJECT "135"

TRAJECT "136"

TRAJECT "137"

TRAJECT "138"

TRAJECT "139"

TRAJECT "140"

TRAJECT "141"

TRAJECT "142"

TRAJECT "143"

TRAJECT "144"

TRAJECT "145"

TRAJECT "146"

TRAJECT "147"

TRAJECT "148"

TRAJECT "149"

TRAJECT "150"

TRAJECT "151"

TRAJECT "152"

TRAJECT "153"

TRAJECT "154"

TRAJECT "155"

TRAJECT "156"

TRAJECT "157"

TRAJECT "158"

TRAJECT "159"

TRAJECT "160"

TRAJECT "161"

TRAJECT "162"

TRAJECT "163"

TRAJECT "164"

TRAJECT "165"

TRAJECT "166"

TRAJECT "167"

TRAJECT "168"

TRAJECT "169"

TRAJECT "170"

TRAJECT "171"

TRAJECT "172"

TRAJECT "173"

TRAJECT "174"

TRAJECT "175"

TRAJECT "176"

TRAJECT "177"

TRAJECT "178"

TRAJECT "179"

TRAJECT "180"

TRAJECT "181"

TRAJECT "182"

TRAJECT "183"

TRAJECT "184"

TRAJECT "185"

TRAJECT "186"

TRAJECT "187"

TRAJECT "188"

TRAJECT "189"

TRAJECT "190"

TRAJECT "191"

TRAJECT "192"

TRAJECT "193"

TRAJECT "194"

TRAJECT "195"

TRAJECT "196"

TRAJECT "197"

TRAJECT "198"

TRAJECT "199"

TRAJECT "200"

TRAJECT "201"

TRAJECT "202"

TRAJECT "203"

TRAJECT "204"

TRAJECT "205"

TRAJECT "206"

TRAJECT "207"

TRAJECT "208"

TRAJECT "209"

TRAJECT "210"

TRAJECT "211"

TRAJECT "212"

TRAJECT "213"

TRAJECT "214"

TRAJECT "215"

TRAJECT "216"

TRAJECT "217"

TRAJECT "218"

TRAJECT "219"

TRAJECT "220"

TRAJECT "221"

TRAJECT "222"

TRAJECT "223"

TRAJECT "224"

TRAJECT "225"

TRAJECT "226"

TRAJECT "227"

TRAJECT "228"

TRAJECT "229"

TRAJECT "230"

TRAJECT "231"

TRAJECT "232"

TRAJECT "233"

TRAJECT "234"

TRAJECT "235"

TRAJECT "236"

TRAJECT "237"

TRAJECT "238"

TRAJECT "239"

TRAJECT "240"

TRAJECT "241"

TRAJECT "242"

TRAJECT "243"

TRAJECT "244"

TRAJECT "245"

TRAJECT "246"

TRAJECT "247"

TRAJECT "248"

TRAJECT "249"

TRAJECT "250"

TRAJECT "251"

TRAJECT "252"

TRAJECT "253"

TRAJECT "254"

TRAJECT "255"

TRAJECT "256"

TRAJECT "257"

TRAJECT "258"

TRAJECT "259"

TRAJECT "260"

TRAJECT "261"

TRAJECT "262"

TRAJECT "263"

TRAJECT "264"

TRAJECT "265"

TRAJECT "266"

TRAJECT "267"

TRAJECT "268"

TRAJECT "269"

TRAJECT "270"

TRAJECT "271"

TRAJECT "272"

TRAJECT "273"

TRAJECT "274"

TRAJECT "275"

TRAJECT "276"

TRAJECT "277"

TRAJECT "278"

TRAJECT "279"

TRAJECT "280"

TRAJECT "281"

TRAJECT "282"

TRAJECT "283"

TRAJECT "284"

TRAJECT "285"

TRAJECT "286"

TRAJECT "287"

TRAJECT "288"

TRAJECT "289"

TRAJECT "290"

TRAJECT "291"

TRAJECT "292"

TRAJECT "293"

TRAJECT "294"

TRAJECT "295"

TRAJECT "296"

TRAJECT "297"

TRAJECT "298"

TRAJECT "299"

TRAJECT "300"

